



BUILT TO HOLD DESIGNED TO LAST

Secure every structure

Our solutions for anchor design in concrete and masonry

April 2026



You can contact us at:
02-099-5300
moth@hilti.com

Anchor solutions

Hilti offers a wide range of anchor fastenings in metal, plastic, cast-in and chemical mortars for light, medium and heavy-duty applications.



EIT COMPLIANCE

To ensure you comply with The Engineering Institute of Thailand (EIT) for selected anchor.

SPEC2SITE

OPTIMISED WORKFLOWS

Improving key on-site workflow to be the best partner for productivity, safety and sustainability.



STRONGEST ANCHORS

The strongest solution for safety in workflow, always fully backed by technical documentation, software and engineering services.

STRONG, RELIABLE CHEMICAL FASTENING

- Injectable hybrid mortar with everyday approvals for post-installed rebar and anchoring in both concrete and masonry
- Auto-cleaning with Hilti hollow drill bit
- Dustless



Material Number	#2123403 / #2123406
Model	RE500V3
Description	Slow cure ultimated epoxy mortar



Material Number	#2123386
Model	RE100
Description	Slow cure Premium epoxy mortar



Material Number	#2262131
Model	HY200-R V3
Description	Fast cure ultimated hybrid mortar



Material Number	#2132024
Model	HY-170
Description	Fast cure Premium hybrid mortar



Model	HVU2
Description	Tapered design for overhead applications



Model	HAS
Description	Pre-cut threaded anchor rod for injectable hybrid/epoxy anchoring



Model	HAS-U
Description	High-performance anchor rod for capsule and injectable hybrid/epoxy anchoring
	<ul style="list-style-type: none"> • Roughen diamond cored holes for better bonding • Allows higher loads



Model	Hollow drill bit
Description	Virtually dust-free hammer drilling in concrete



Model	Hole roughening tool
Description	Roughening smooth diamond cored-holes in concrete



Material Number	2411684
Model	VC 40LX 220-240V
Description	Construction dust extractor



ADAPTIVE TORQUE SYSTEM



HST4

- Our highest performing wedge expansion anchor for bearing high static and seismic loads in cracked concrete
- Size: M8-M20
- Material, corrosion: Carbon steel, zinc-plated
- Head configuration: Externally threaded
- Installation tools: TE 30-22 cordless rotary hammer, TE 6-22 Cordless rotary hammer, SIW 4AT-22 ½" Cordless impact wrench, SIW 6AT-22 Mid-Torque impact wrench



HST2 V3

- High-performance wedge anchor (M8-M16) for static and seismic loads in cracked concrete (carbon steel)
- Size: M8-M16
- Material, corrosion: Carbon steel, zinc-plated
- Head configuration: Externally threaded
- Installation tools: TE 30-22 cordless rotary hammer, TE 6-22 Cordless rotary hammer, SIW 4AT-22 ½" Cordless impact wrench, SIW 6AT-22 Mid-Torque impact wrench



Model	SIW4-22, SIW6-22, SIW8-22, SIW10-22 + AT Module
Description	Cordless impact wrench with the ultimate balance of power and handling

SCREW ANCHOR HUS4



HUS4-H / HUS4-C

- High productivity with reduced drilling and fewer installation steps.
- ETA-approved for cracked/uncracked concrete, seismic categories C1 & C2, and fire performance.
- Multiple embedment depths for flexible design and optimized load capacity.
- No hole cleaning required for sizes 8–14 depending on the version.
- Adjustability (unscrew-rescrew) available for certain sizes and applications.
- Compatible with PROFIS Engineering for optimized design and material savings.

CAST-IN CHANNEL SYSTEM



HAC-C / HAC-C-T / T-bolt HBC

- Fast and simple installation with no on-site drilling required.
- Provides high adjustability—attachments can be positioned freely along the channel.
- Improves safety by eliminating dust, noise, and risk of hitting reinforcement.
- Delivers immediate load-carrying capability for MEP and structural connections.
- Ideal for fixing masonry supports, façades, and MEP hangers.
- Supports compliant design with AC232, ACI 318, Eurocode, and ETA approvals.
- Reduces installation time and enhances future modification capability.



Chemical Anchor Systems



HIT-RE 500V3

- Slow cure ultimated epoxy mortar
- Curing time 4.5 hr @30C
- EIT (Thailand Standard) and ACI approval
- Rebar connections and heavy-duty anchoring



HIT-RE 100

- Slow cure Premium epoxy mortar
- Curing time 8 hr @30C
- EIT (Thailand Standard) and ACI approval
- Anchor thoery design (ACI)



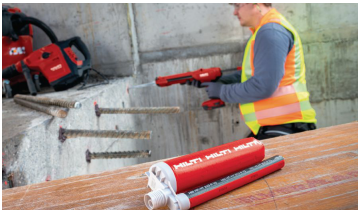
HIT-RE 10

- Slow cure Standard epoxy mortar
- Curing time 12 hr @30c
- Non-structural works



HVU2

- Tapered design for overhead applications
- EIT (Thailand Standard) and ACI approval
- Working time 5 min and not required for curing time



HIT-HY200R V3

- Fast cure ultimated hybrid mortar (mansory)
- EIT (Thailand Standard) and ACI approval
- Curing time 1h @ 30c
- Applicable with HIT-Glass system
- Rebar connections and structural baseplates
- Working time 6 min



HIT-HY270

- Fast cure ultimated hybrid mortar (mansory)
- EIT and ACI approvals
- Appicale with HIT-Glass system
- Rebar connections and structural baseplates
- Working time 6 mins / Curing time 1 hr @30C



HIT-HY170

- Fast cure Premium hybrid mortar
- Curing time 30 min @30C
- Suitable for mansory applications



HDE 500-22

- Battery-powered (Nuron battery platform) dispenser
- Smart features to increase speed, safety, and reduce waste



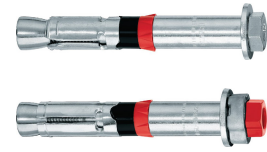
Mechanical Anchor Systems

HEAVY-DUTY WEDGE ANCHOR



HSL4 / HSL4-B

- Ultimate-performane heavy-duty wedge anchor
- ACI approvals
- Safety-relevant applications in concrete (carbon steel)
- Materia,corrosion: Carbon steel, zinc-plated
- Fire, Seismic

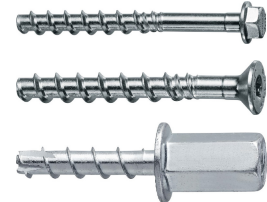


SCREW ANCHOR

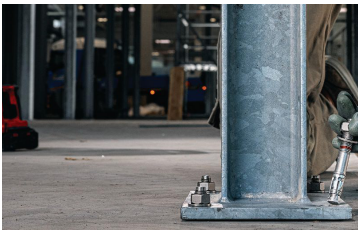


HUS4-H / HUS4-C / HUS3-I

- High-performing hexagonal head screw anchor
- Suitable for concrete and masonry applications
- Material, corrosion: Carbon steel, zinc-plated

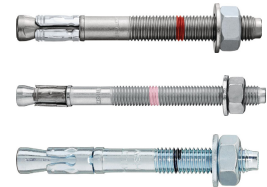


EXPANSION ANCHOR



HST4 / HST2V3 / HSV

- **HST4 Material:** Carbon steel, zinc-plated, HDG, stainless steel A4
- **HST2V3 Material:** Carbon steel, zinc-plated, stainless steel A4
- **HSV:** Economical wedge anchor for static load in uncracked concrete

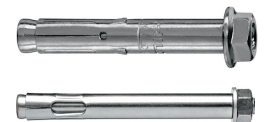


SLEEVE ANCHOR

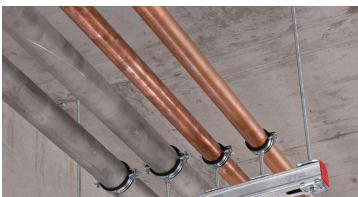


HLC / HLV

- Economical sleeve anchor
- Environmental condition: Indoor, dry conditions
- Material, corrosion: Carbon steel, zinc-plated



DROP-IN ANCHOR

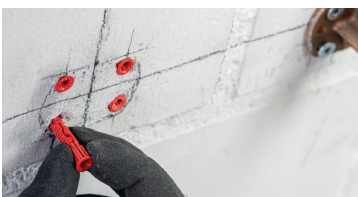


HKD / HKV

- **HKD:** High-performace carbon seel drop-in anchor
- **Material:** Carbon steel5.8,zinc-plated,stainless steel A4
- **HKV:** Economical manual-set drop-in anchor
- **Material:** Carbon steel5.8,zinc-plated



UNIVERSAL PLASTIC ANCHOR



HUD-2 / HUD-L

- Light-duty fastening to hollow and solid base materials
- Base materials: Concrete (aerated), Drywall, Mansory (Hollow), Mansory (Solid)
- Material, corrosion: Plastic



Standard Items Available

Item Number	Description	MRP	Qty/pack
HAS anchor rod (HDG), complete with nut and washer			
Cold formed carbon steel grade 6.8, 99.99% zinc (galvanised to min. 5 microns)			
2390227	Anchor rod HAS 8.8 M10x115	X0	20 PC
2390228	Anchor rod HAS 8.8 M10x130	X0	20 PC
2390229	Anchor rod HAS 8.8 M10x150	X0	20 PC
2390232	Anchor rod HAS 8.8 M12x120	X0	20 PC
2390233	Anchor rod HAS 8.8 M12x160	X0	20 PC
2390234	Anchor rod HAS 8.8 M12x180	X0	20 PC
2390236	Anchor rod HAS 8.8 M12x220	X0	20 PC
2390237	Anchor rod HAS 8.8 M16x150	X0	20 PC
2390238	Anchor rod HAS 8.8 M16x190	X0	20 PC
2390239	Anchor rod HAS 8.8 M16x220	X0	20 PC
2390240	Anchor rod HAS 8.8 M16x260	X0	10 PC
2390242	Anchor rod HAS 8.8 M20x260	X0	10 PC
2390167	Anchor rod HAS 8.8 M12x1000	X0	10 PC
2390168	Anchor rod HAS 8.8 M16x1000	X0	5 PC
2390169	Anchor rod HAS 8.8 M20x1000	X5	5 PC
2390170	Anchor rod HAS 8.8 M24x1000	X0	5 PC

Item Number	Description	MRP	Qty/pack
Cold formed carbon steel grade 8.8, 99.99% zinc (Hot-Dip Galvanized to min. 45 microns)			
2390247	Anchor rod HAS 8.8 HDG M12x120	X0	20 PC
2390248	Anchor rod HAS 8.8 HDG M12x160	X0	20 PC
2390250	Anchor rod HAS 8.8 HDG M16x150	X0	20 PC
2390251	Anchor rod HAS 8.8 HDG M16x190	X0	20 PC
2434585	Anchor rod HAS 8.8 HDG M16x300	X0	10 PC
2390254	Anchor rod HAS 8.8 HDG M20x260	X0	10 PC

Item Number	Description	MRP	Qty/pack
Stainless steel A4, DIN 1.4401/316			
2390255	Anchor rod HAS A4 M8x80	X0	20 PC
2390259	Anchor rod HAS A4 M10x130	X0	20 PC
2390264	Anchor rod HAS A4 M12x160	X0	20 PC
2390269	Anchor rod HAS A4 M16x190	X0	20 PC
2390271	Anchor rod HAS A4 M16x260	X0	10 PC
2390273	Anchor rod HAS A4 M20x260	X0	10 PC

Item Number	Description	MRP	Qty/pack
HAS-U anchor rod			
Carbon steel grade 5.8 (galvanised to min. 5 microns)			
2223707	Anchor rod HAS-U 5.8 M10x130	X0	20 PC
2223821	Anchor rod HAS-U 5.8 M12x110	X0	20 PC
2223823	Anchor rod HAS-U 5.8 M12x160	X0	20 PC
2223828	Anchor rod HAS-U 5.8 M16x150	X0	20 PC
2223829	Anchor rod HAS-U 5.8 M16x165	X0	20 PC
2223830	Anchor rod HAS-U 5.8 M16x190	X0	20 PC
2223874	Anchor rod HAS-U 5.8 M20x240	X0	10 PC
2223876	Anchor rod HAS-U 5.8 M20x260	X0	10 PC
2223881	Anchor rod HAS-U 5.8 M24x300	X0	5 PC

Item Number	Description	MRP	Qty/pack
Carbon steel grade 5.8 (hot dip galv. to min. 45 microns)			
2223938	Anchor rod HAS-U 5.8 HDG M12x120	X0	20 PC
2223939	Anchor rod HAS-U 5.8 HDG M12x160	X0	20 PC
2223943	Anchor rod HAS-U 5.8 HDG M16x150	X5	20 PC
2223945	Anchor rod HAS-U 5.8 HDG M16x190	X5	20 PC
2223904	Anchor rod HAS-U 5.8 HDG M20x300	X6	10 PC
2223908	Anchor rod HAS-U 5.8 HDG M24x300	X5	5 PC



Item Number	Description	MRP	Qty/pack
Stainless steel A4, DIN 1.4401/316			
2223838	Anchor rod HAS-U A4 M10x130	X0	20 PC
2223844	Anchor rod HAS-U A4 M12x160	X0	20 PC
2223850	Anchor rod HAS-U A4 M16x190	X5	20 PC
2223922	Anchor rod HAS-U A4 M16x300	X6	10 PC
2223926	Anchor rod HAS-U A4 M20x240	X5	10 PC
2223932	Anchor rod HAS-U A4 M24x300	X6	5 PC

Item Number	Description	MRP	Qty/pack
HIS-N internally threaded sleeve with cover cap			
Carbon steel grade 5.8, 5mm zinc (galvanised to min. 5 microns)			
258024	Int. threaded sleeve HIS-RN M8x90 A4	X6	10 PC
258016	Int. threaded sleeve HIS-N M10x110	X6	10 PC
258017	Int. threaded sleeve HIS-N M12x125	X6	5 PC
258018	Int. threaded sleeve HIS-N M16x170	X6	5 PC
258019	Int. threaded sleeve HIS-N M20x205	X6	5 PC

Item Number	Description	MRP	Qty/pack
Stainless steel A4, DIN1.4401/316			
258025	Int. threaded sleeve HIS-RN M10x110 A4	X6	10 PC
258026	Int. threaded sleeve HIS-RN M12x125 A4	X6	5 PC
258027	Int. threaded sleeve HIS-RN M16x170 A4	X6	5 PC
258028	Int. threaded sleeve HIS-RN M20x205 A4	X6	5 PC

Item Number	Description	MRP	Qty/pack
HSL4-G (Threaded rod head version)			
Carbon steel grade 8.8, 5mm zinc galvanised to min. 5 microns			
2237420	Anchor HSL4 M8 d12x82 5/-/-	X6	40 PC
2237418	Anchor HSL4 M10 d15x109 20/-/-	X6	20 PC
2237411	Anchor HSL4 M12 d18x111 5/-/-	X0	20 PC
2237408	Anchor HSL4 M16 d24x153 25/-/-	X5	10 PC
2237420	Anchor HSL4 M8 d12x82 5/-/-	X6	40 PC

Item Number	Description	MRP	Qty/pack
Carbon steel grade 8.8, 5mm zinc galvanised to min. 5 microns			
2237444	Anchor HSL4-G M16 d24x175 25/-/-	X5	10 PC
2237373	Anchor HSL4-G M20 d28x235 60/30/-	X6	1 PC
2237454	Anchor HSL4-G M24 d32x260 60/30/-	X6	4 PC

Item Number	Description	MRP	Qty/pack
HST4 : Expansion anchor			
Carbon steel, zinc galvanised to min. 5 microns			
2329055	Stud anchor HST4 M10x90 5-40	X0	72 PC
2329057	Stud anchor HST4 M10x110 5-60	X0	60 PC
2329064	Stud anchor HST4 M12x115 5-50	X0	40 PC
2329065	Stud anchor HST4 M12x125 5-60	X0	32 PC
2329067	Stud anchor HST4 M12x145 5-80	X0	32 PC
2329074	Stud anchor HST4 M16x135 5-35	X0	20 PC
2329075	Stud anchor HST4 M16x145 5-45	X0	20 PC
2329076	Stud anchor HST4 M16x170 5-70	X0	12 PC
2329080	Stud anchor HST4 M20x170 5-30	X5	5 PC

Item Number	Description	MRP	Qty/pack
Stainless steel A4, DIN 1.4401/316			
2329094	Stud anchor HST4-R M8x65 5-20	X6	100 PC
2329102	Stud anchor HST4-R M10x100 5-50	X6	72 PC
2329111	Stud anchor HST4-R M12x125 5-60	X6	40 PC
2329119	Stud anchor HST4-R M16x135 5-35	X6	20 PC
2329126	Stud anchor HST4-R M20x200 5-60	X6	5 PC



Item Number	Description	MRP	Qty/pack
HST2 V3 : Expansion anchor			
Carbon steel, ๓๒ zinc galvanised to min. 5 microns			
2345234	Stud anchor HST2 V3 M8x80 5-30	X0	100 PC
2345236	Stud anchor HST2 V3 M8x100 5-50	X0	50 PC
2345251	Stud anchor HST2 V3 M10x100 5-35	X0	40 PC
2345250	Stud anchor HST2 V3 M10x90 5-25	X0	50 PC
2345258	Stud anchor HST2 V3 M12x115 5-35	X0	25 PC
2345261	Stud anchor HST2 V3 M12x175 5-95	X0	25 PC
2345265	Stud anchor HST2 V3 M16x120 5-20	X0	16 PC
2345267	Stud anchor HST2 V3 M16x140 5-40	X0	16 PC

Item Number	Description	MRP	Qty/pack
Carbon steel, ๓๒ zinc galvanised to min. 50 microns			
2345314	Stud anchor HST2-F V3 M8x70 5-20	X0	100 PC
2345320	Stud anchor HST2-F V3 M10x90 5-25	X0	50 PC
2345325	Stud anchor HST2-F V3 M12x115 5-35	X0	25 PC
2345330	Stud anchor HST2-F V3 M16x140 5-40	X0	16 PC

Item Number	Description	MRP	Qty/pack
Stainless steel A4			
2345294	Stud anchor HST2-R V3 M10x90 5-25	X0	50 PC
2345301	Stud anchor HST2-R V3 M12x115 5-35	X0	25 PC
2345310	Stud anchor HST2-R V3 M16x140 5-40	X0	16 PC

Item Number	Description	MRP	Qty/pack
HUS4-H : Screw anchor			
Carbon steel grade 8.8, zinc galvanised to min. 5 microns			
2293135	Screw anchor HUS4-H 8x55 15/-/-	X0	50 PC
2293556	Screw anchor HUS4-H 10x100 45/25/15	X0	50 PC
2293566	Screw anchor HUS4-H 12x100 40/20/-	X0	25 PC
2293571	Screw anchor HUS4-H 14x130 65/45/15	X0	16 PC

Item Number	Description	MRP	Qty/pack
HKD : flush anchor			
Carbon steel grade 5.8, ๓๒ zinc galvanised to min. 5 microns			
376967	Flush anchor HKD M10x40	X0	50 PC
378544	Flush anchor HKD M12x50	X0	50 PC
382941	Flush anchor HKD M16x65	X0	50 PC

Item Number	Description	MRP	Qty/pack
HUD universal anchor			
Plastic			
315938	Univ. anchor HUD-L 6x50 (400)	X0	400 PC
2287816	Univ. anchor HUD-2 8x40 (400)	X0	400 PC
331618	Univ. anchor HUD-1 10x50 (200)	X0	200 PC

Note: For more items please reach out to Hilti's Price List

Looking for more options? Contact your sales representative or our Customer Service at 02-099-5300, or email us at moth@hilti.com

